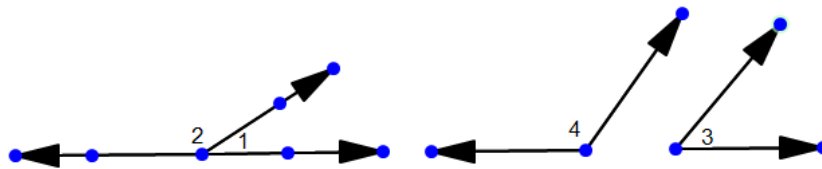


Name: \_\_\_\_\_

## Supplementary and Complementary Angles

Refer to the given diagram to answer questions 17 and 18



$\angle 1$  and  $\angle 2$  are supplements

$\angle 3$  and  $\angle 4$  are supplements.

- 1) If  $m\angle 1 = m\angle 3 = 27$ , find  $m\angle 2$  and  $m\angle 4$
- 2) If  $m\angle 1 = m\angle 3 = x$ , find  $m\angle 2$  and  $m\angle 4$  in terms of  $x$ .
- 3) If two angles are congruent, must their supplements be congruent?
- 4) The measure of an angle is 50 more than that of its complement. Find the measure of each angle.
- 5) The measure of an angle is 70 more than that of its supplement. Find the measure of each angle.
- 6) The measure of an angle is 3 times that of its supplement. Find the measure of each angle.
- 7) The measure of an angle is 30 less than 5 times the measure of its complement. Find the measure of each angle.
- 8) The measure of an angle is 20 more than 3 times the measure of its supplement. Find the measure of each angle.
- 9) The measure of an angle is  $\frac{1}{5}$  the measure of its complement. Find the measure of each angle.
- 10) The measure of an angle is  $\frac{2}{3}$  the measure of its supplement. Find the measure of each angle.