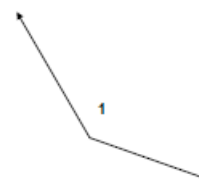


Name: _____

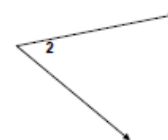
Angle Measurement

A) Measure the following angles with a protractor, then classify them.

1)



2)



B) 3) Draw the following separate angles with a protractor: $A = 23^\circ$ and $B = 113^\circ$

C) Choose the best answer

4) If one angle of a linear pair is obtuse, then the other angle must be:

- a) Congruent
- b) Acute
- c) Obtuse

5) If one angle of a linear pair is acute, then the other angle must be:

- a) Congruent
- b) Acute
- c) Obtuse

6) If one angle of a linear pair is obtuse, then the other angle must be:

- a) Congruent
- b) Acute
- c) Obtuse
- d) Right

7) If the measure of one angle is 45° , then the angle is:

- a) Congruent
- b) Acute
- c) Obtuse
- d) Right

8) If the measure of one angle is 175° , then the angle is:

- a) Congruent
- b) Acute
- c) Obtuse
- d) Right

9) If the measure of one angle is 89° , then the angle is:

- a) Congruent
- b) Acute
- c) Obtuse
- d) Right

10) If the measure of one angle is 98° , then the angle is:

- a) Congruent
- b) Acute
- c) Obtuse
- d) Right