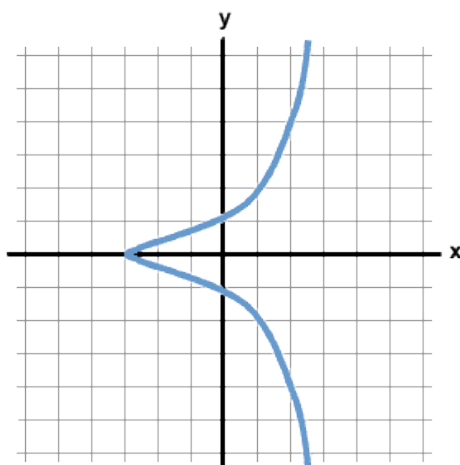


Name: _____

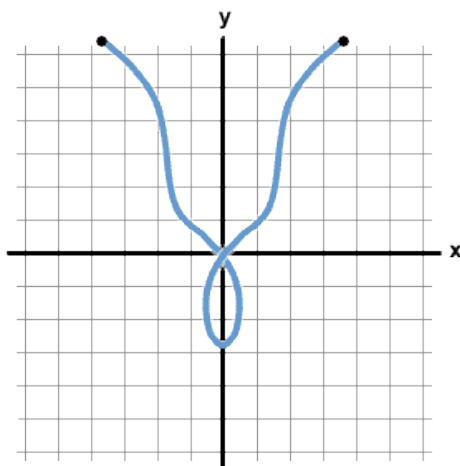
Analyzing Graphs of Functions

- 1) Is each of the following diagrams specify if the graph is symmetric with respect to the x -axis, the y -axis and the origin?

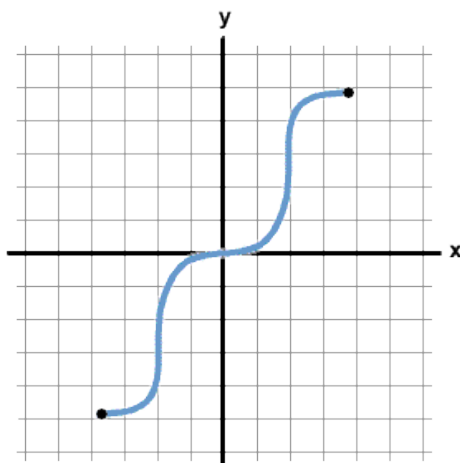
1.



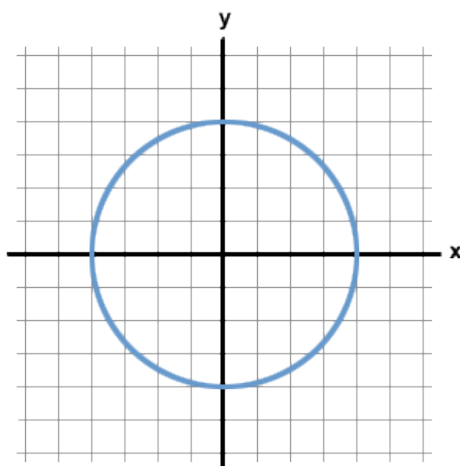
2.



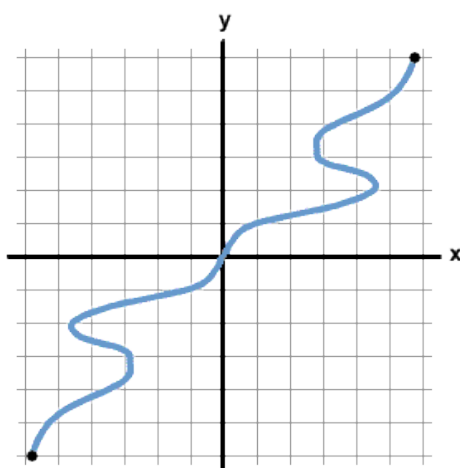
3.



2) 4.



5.



- 3) Let $f(x) = x$. Write the equation for the function resulting from a vertical shift of 3 units downward and a horizontal shift of 2 units to the right of the graph of $f(x)$.
- 4) Let $f(x) = x$. Write the equation for the function resulting from a vertical shift of 3 units downward and a horizontal shift of 2 units to the right of the graph of $f(x)$.